



SMALL, PERSONAL, AND NURTURING



Small Class Sizes

1:10 Faculty/Student ratio
Every student is known and valued as a unique individual



Outstanding Faculty

Our teachers are experienced and committed to nurturing both creative and critical thinking skills



Child-Centered

Using Reggio/Montessori best practices, classrooms are spacious, hands-on, and foster whole-child education



Community

We foster compassionate community- building between parents, teachers, students, and alumni

OUR PHILOSOPHY

We focus on each child's **development**; social, emotional, and physical and encourage **creativity**. We seek to nurture the **academic, social and spiritual skills** needed to live, work, and play in community. We encourage students to see the world from many perspectives and teach our students to be "global citizens." We welcome all students, regardless of identity or background.

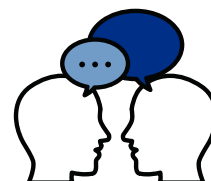
AFFORDABILITY

We work closely with our families to ensure that **all** families are able to access our programs

Our tuition costs are competitive for comparable programs in both Early Childhood and Elementary

FOREIGN LANGUAGE INSTRUCTION

Hebrew language instruction begins at **Kindergarten** and progresses each year to develop reading, writing, and speaking skills



RIGOROUS, EXPLORATIVE CURRICULUM



Outdoor Experiences

Our students have daily opportunities to connect with nature and enjoy field trips to nature centers



Community Service

Our students take their Jewish values out of the classroom and into the world with them



Arts

Our curriculum is infused with daily exposure to music and the arts



STEAM

Science, Technology, Engineering, Arts, Math

Using the STEAM approach enhances students' critical thinking and emphasizes the intersection of these fields

JEWISH VALUES

Our education is rooted in Jewish values and traditions. Throughout the year, lessons focus on personal attributes such as **responsibility, gratitude, and courage**. Students put into practice the values of **visiting the sick, feeding the hungry**, and other **habits of character**. Within an accepting and egalitarian environment, we encourage each student to grow and thrive **regardless of religious affiliation**.



Talmud Torah of St. Paul

LEARN MORE!

ttsp.org | info@ttsp.org | (651)698-8807

768 Hamline Avenue South, St. Paul, MN 55116